




Metford Road Community Orchard Map

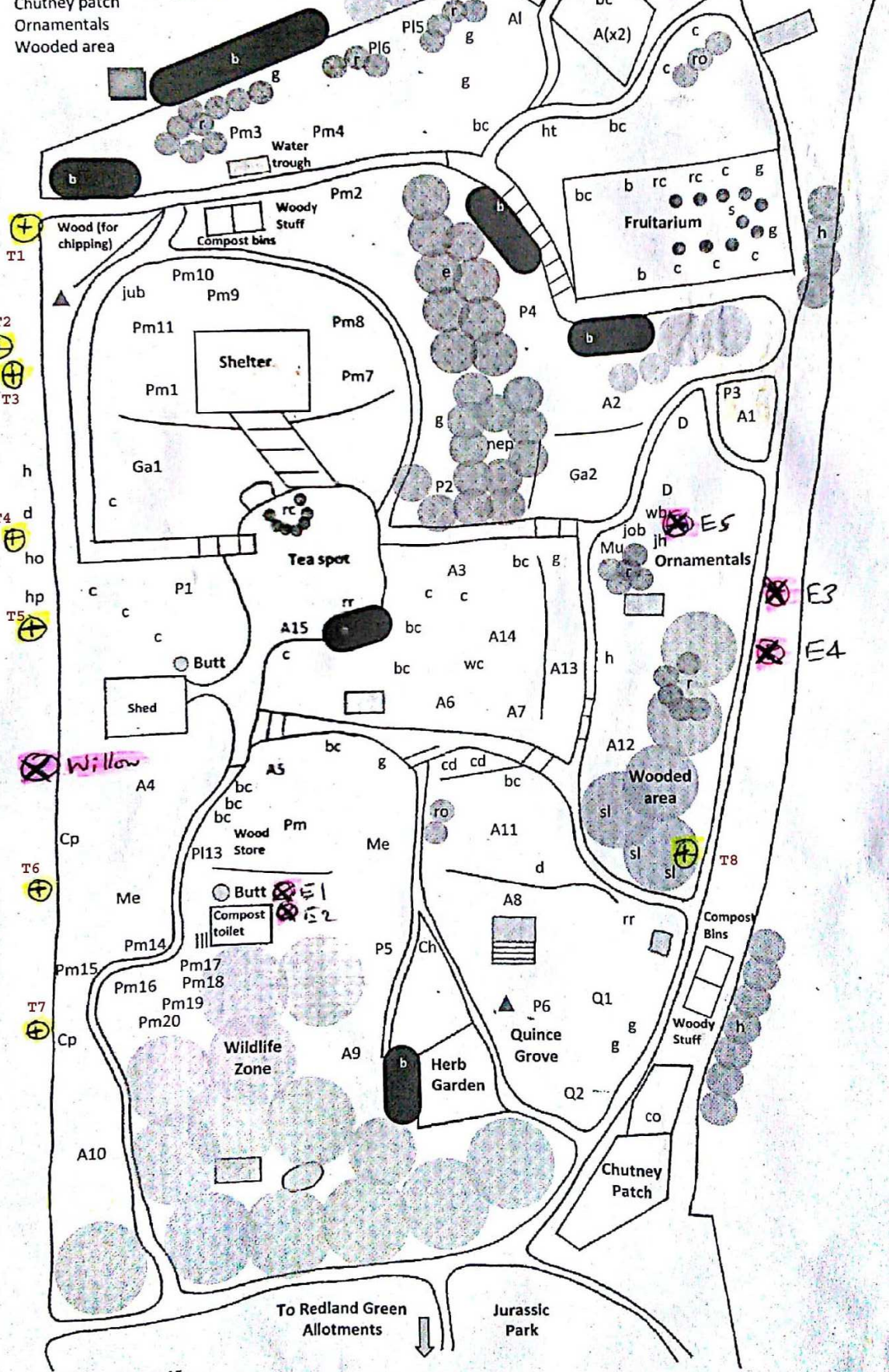
Sep 2015



- Zones:**
 Tea spot
 Wildlife zone
 Quince Grove
 Mediterranean
 Fruitarian
 Herb Garden
 Chutney patch
 Ornamentals
 Wooded area

- Features:**
 Water
 Comfrey/Nettle Bin

To fell 
 To prune  Tn
 E/m  En



Fruit Trees

- (A) Apple
 1 Scarlet Pimpernel
 2 Golden Nobel
 4 Peasgood's Nonsuch
 5 Lord Derby
 6 D'Arcy Spice
 7 Pitmaston's Pineapple
 8 Tom Putt
 10 Early Victoria
 11 Orleans Rennet M26
 12 Egremont Russet
 13 Ashmeads Kennel M26
 14 Pippin M27
 15 Beauty of Bath
- (Al) Almond
 (Ch) Cherry
 (Cp) Cherry plum
 (D) Damson
 (F) Fig
 (Ga) Gage
 1 Quillins Pixy
 2 Cambridge, St. Julian A
- (Gr) Grape vine
 (Me) Medlar
 (Mu) Mulberry
 (P) Pear
 2 Jargonelle
 4 Thorn
 5 Concorde
 6 Williams
- (Pm) Plum (Pershire)
 2-20
- (Q) Quince
 1 Portugal A
 2 Aromatnaya A

Soft Fruit

- (bc) Black current
 (bl) Blueberry
 (b) Brambles (Blackberry)
 (c) Current
 (g) Gooseberry
 (job) Jostaberry
 (jub) June berry
 (lb) Loganberry
 (nep) Nepalese raspberry
 (r) Raspberries
 (rc) Red current
 (s) Strawberries
 (tb) Tayberry
 (wc) White current
 (wob) Worcester berry

Herbs

- (ma) Marjoram
 (ro) Rosemary
- Other**
 (cd) Cardoon
 (co) Comfrey
 (d) Dogwood
 (e) Elaeagnus
 (h) Hazels
 (ha) Hawthorn, grafted with aronia berries
 (ho) Holly
 (hp) Hippopotamus plant
 (jh) Japanese Honeysuckle,
 (rh) Rhubarb
 (rr) Rosa rugosa
 (sl) Sloes